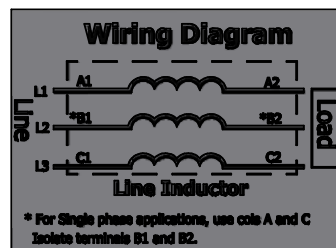


0.44 Wide x 0.75 Long Slots  
4 Places.



480 Rated Voltage, 600 Max Voltage, High Z, Impedance.

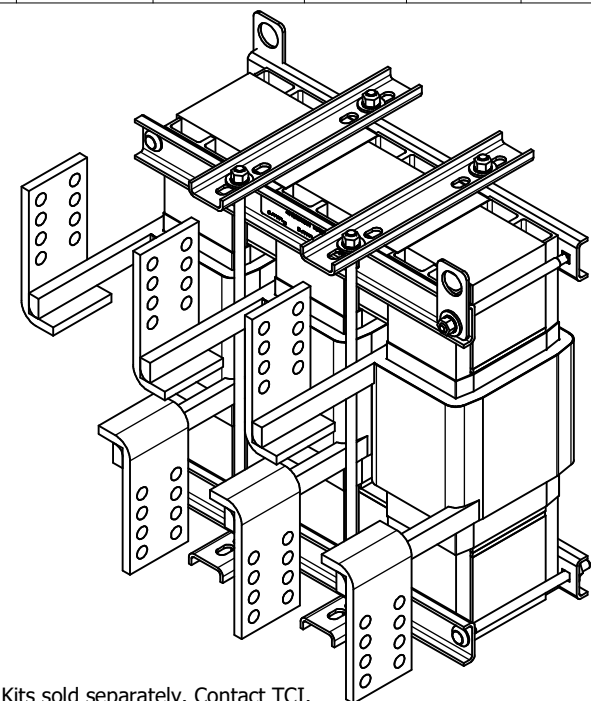
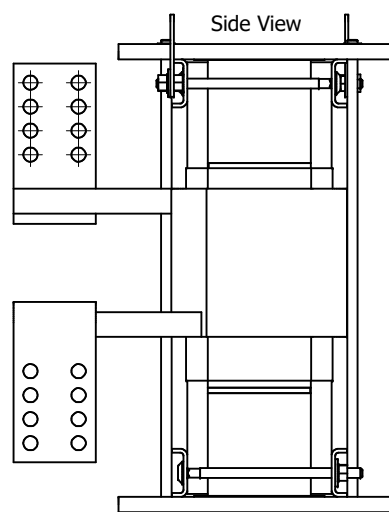
Part Number	Horsepower (HP)	Motor Amps (A)	Maximum Amps (A)	Inductance (uH)	Weight (LBS)	Available Lug Kit	Terminal Hole Size (Inches)
KDRX3H	900	1080	1100	28.9	308	SLK17	0.53

575 Rated Voltage, 600 Max Voltage, Low Z, Impedance.

Part Number	Horsepower (HP)	Motor Amps (A)	Maximum Amps (A)	Inductance (uH)	Weight (LBS)	Available Lug Kit	Terminal Hole Size (Inches)
KDRX43L	1100	1056	1064	21.7	315	SLK17	0.53
KDRX44L	1250	1200	1200	19.1	300	SLK18	0.53

575 Rated Voltage, 600 Max Voltage, High Z, Impedance.

Part Number	Horsepower (HP)	Motor Amps (A)	Maximum Amps (A)	Inductance (uH)	Weight (LBS)	Available Lug Kit	Terminal Hole Size (Inches)
KDRX41H	900	864	864	44.3	310	SLK17	0.53
KDRX42H	1000	960	1000	39.8	375	SLK17	0.53
KDRX43H	1100	1056	1064	36.2	450	SLK17	0.53



Notes:

1. KDR Lug Kits sold separately. Contact TCI.
2. UL file number: cULus Listed File E116124.
3. KDR Drive Reactors Comply With The Thermal and Altitude Standards Set Forth by NEMA ST20-1992.
4. KDR IOM Manual Part Number 30895
5. NEC Current For 208/240 Volts, Horsepower Based On 208 Volts.
6. Material(s) Shall be RoHS Compliant
7. Customer Is Responsible For Installation To Meet All National And Local Electrical Codes.

THE INFORMATION AND DESIGNS CONTAINED IN THIS DRAWING ARE CONFIDENTIAL AND THE PROPRIETARY PROPERTY OF ALLIED MOTION TECHNOLOGIES INC. AND ITS SUBSIDIARIES. NEITHER THIS DESIGN NOR ANY INFORMATION CONTAINED IN THIS DRAWING MAY BE REPRODUCED OR DISCLOSED TO OTHERS WITHOUT THE EXPRESS WRITTEN CONSENT OF ALLIED MOTION TECHNOLOGIES INC. AND ITS SUBSIDIARIES.

NO	REVISION	DATE	BY	DATE	BY
E	7049, Remove KDRX3L	5/12/25	DSW		
D	6954 Remove KDRX1L	03/25/2025	MY		
C	6252 Remove KDRX4H	4/26/2023	DSW		
B	5796, Title blk updated chg lift ring sides	12/8/2021	DSW		
A	Combined Drawings	3/5/2018	DSW		

TOLERANCES (EXCEPT AS NOTED)
DECIMAL
.XX ± .25
.XXX ± .10
FRACTIONAL
± 1/16
ANGULAR
± 1°

<b>TCI</b>	W132N10611 (Rev 19Feb)
An Allied Motion Company	© 2025 TCI, LLC
KDR X Frame, Copper Bus	
Reactor Drawing	
DATE 3/5/2018	107539-3
SCALE 1:3.2	
SHEET 1 OF 1	